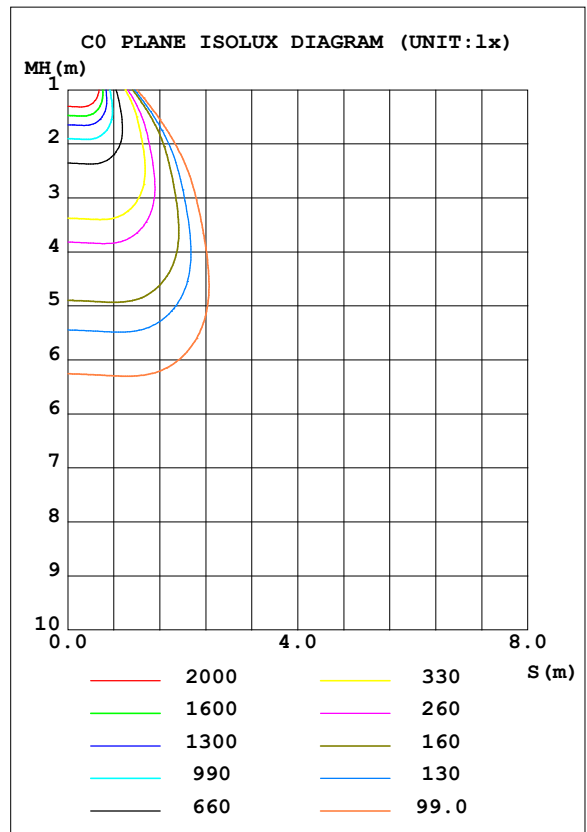
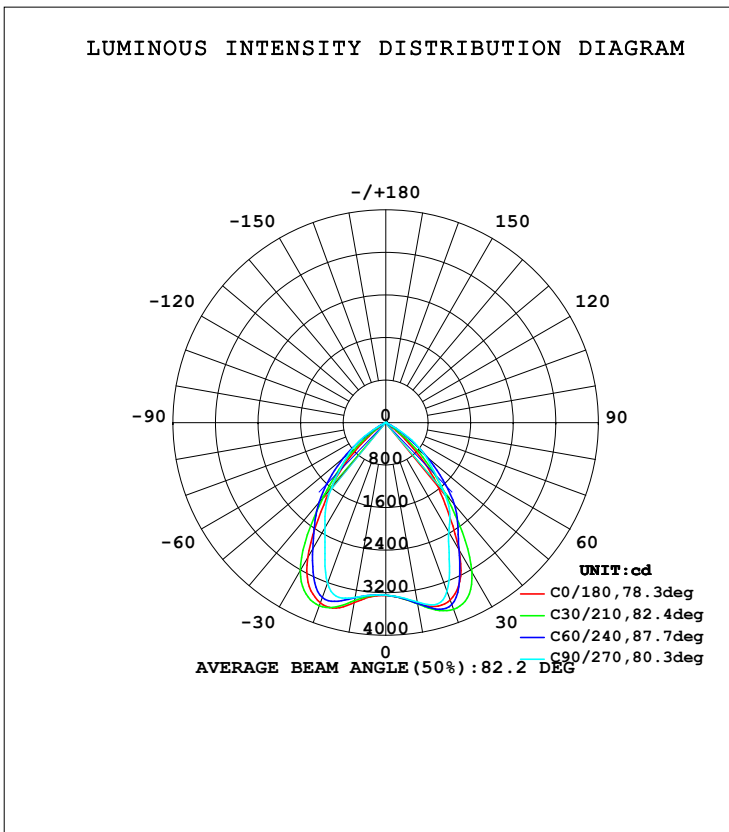


LUMINAIRE PHOTOMETRIC TEST REPORT

Test:U:221.1V I:0.1850A P:40.10W PF:0.9760 Lamp Flux:5679.62x1 lm		
NAME:LED Module panel light 6060 40W(S)	TYPE:	WEIGHT:
SPEC.:AC-MP6060-40WS	DIM.:	SERIAL No.:
MFR.:	SUR.:	PROTECTION ANGLE:

DATA OF LAMP		PHOTOMETRIC DATA Eff: 141.64 lm/W			
MODEL		I _{max} (cd)	3800	S/MH (C0/180)	1.14
NOMINAL POWER (W)		LOR (%)	100.0	S/MH (C90/270)	1.09
RATED VOLTAGE (V)		TOTAL FLUX (lm)	5679.6	η UP, DN (C0-180)	0.1, 51.4
NOMINAL FLUX (lm)	5679.62	CIE CLASS	DIRECT	η UP, DN (C180-360)	0.0, 48.5
LAMPS INSIDE	1	η up (%)	0.1	CIBSE SHR NOM	1.00
TEST VOLTAGE (V)		η down (%)	99.9	CIBSE SHR MAX	1.15



C Range: 0 - 360DEG
 C Interval: 15.0DEG
 Test Speed: HIGH
 Temperature: 25.3DEG
 Operators: YU
 Test Date: 2018-07-18

γ Range: 0 - 180DEG
 γ Interval: 1.0DEG
 Test System: EVERFINE GO-2000B_V1 SYSTEM V2.0.287
 Humidity: 65.0%
 Test Distance: 8.000m [K=1.0800]
 Remarks:

ZONAL FLUX DIAGRAM

ZONAL FLUX DIAGRAM:

γ	C0	C45	C90	C135	C180	C225	C270	C315	γ	Φ zone	Φ total	%lum, lamp
10	3452	3456	3425	3404	3439	3376	3335	3416	0- 10	317.8	317.8	5.59,5.59
20	3547	3765	3377	3790	3605	3653	3210	3623	10- 20	1005	1323	23.3,23.3
30	2757	3122	2373	3267	2941	3084	2292	2937	20- 30	1503	2826	49.8,49.8
40	1475	1903	1705	2083	1605	1925	1581	1740	30- 40	1443	4269	75.2,75.2
50	401.6	857.1	966.9	1002	506.9	866.7	905.4	727.5	40- 50	981.6	5250	92.4,92.4
60	24.03	106.9	263.3	144.9	24.44	103.2	239.9	74.46	50- 60	382.6	5633	99.2,99.2
70	2.392	3.393	5.356	4.238	3.124	4.610	9.457	3.688	60- 70	35.80	5669	99.8,99.8
80	1.224	1.796	2.592	1.955	1.373	1.927	2.482	1.709	70- 80	2.988	5672	99.9,99.9
90	2.560	3.305	3.747	3.196	1.914	2.619	3.218	2.901	80- 90	2.292	5674	99.9,99.9
100	6.697	7.566	8.087	7.385	5.177	6.350	7.009	6.574	90-100	5.199	5679	100,100
110	0	0	0	0	0	0	0	0	100-110	0.3688	5680	100,100
120	0	0	0	0	0	0	0	0	110-120	0	5680	100,100
130	0	0	0	0	0	0	0	0	120-130	0	5680	100,100
140	0	0	0	0	0	0	0	0	130-140	0	5680	100,100
150	0	0	0	0	0	0	0	0	140-150	0	5680	100,100
160	0	0	0	0	0	0	0	0	150-160	0	5680	100,100
170	0	0	0	0	0	0	0	0	160-170	0	5680	100,100
180	0	0	0	0	0	0	0	0	170-180	0	5680	100,100
DEG	LUMINOUS INTENSITY:cd									UNIT:lm		

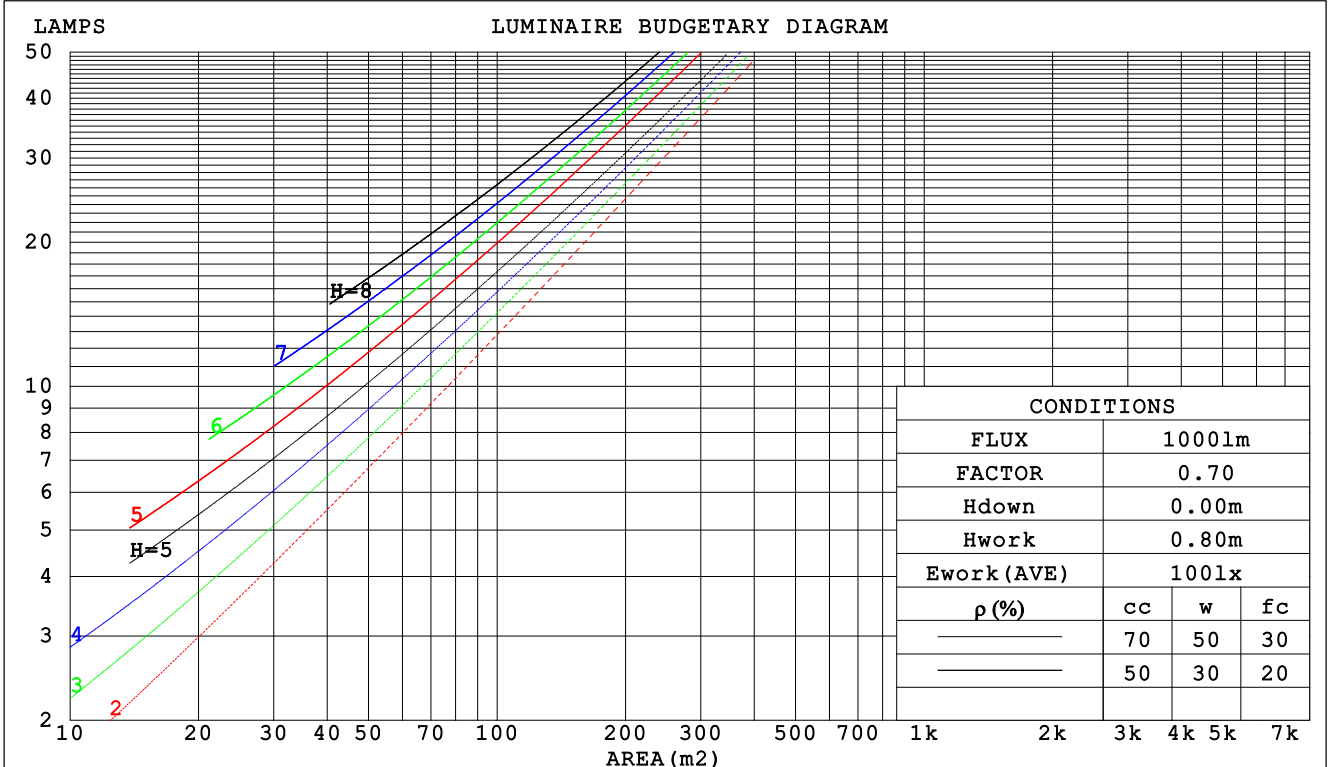
C Range: 0 - 360DEG
 C Interval: 15.0DEG
 Test Speed: HIGH
 Temperature:25.3DEG
 Operators:YU
 Test Date:2018-07-18

γ Range: 0 - 180DEG
 γ Interval: 1.0DEG
 Test System:EVERFINE GO-2000B_V1 SYSTEM V2.0.287
 Humidity:65.0%
 Test Distance:8.000m [K=1.0800]
 Remarks:

CU AND LUMINAIRE BUDGETARY ESTIMATE DIAGRAM

Test:U:221.1V I:0.1850A P:40.10W PF:0.9760 Lamp Flux:5679.62x1 lm		
NAME:LED Module panel light 6060 40W(S)	TYPE:	WEIGHT:
SPEC.:AC-MP6060-40WS	DIM.:	SERIAL No.:
MFR.:	SUR.:	PROTECTION ANGLE:

ρ_{cc}	80%			70%			50%			30%			10%			0
ρ_w	50%	30%	10%	50%	30%	10%	50%	30%	10%	50%	30%	10%	50%	30%	10%	0
ρ_{fc}	20%			20%			20%			20%			20%			0
RCR	RCR:Room Cavity Ratio						Coefficients of Utilization(CU)									
0.0	1.19	1.19	1.19	1.16	1.16	1.16	1.11	1.11	1.11	1.06	1.06	1.06	1.02	1.02	1.02	.00
1.0	1.09	1.06	1.04	1.07	1.05	1.02	1.03	1.01	.99	.99	.98	.96	.96	.94	.93	.91
2.0	.00	.95	.91	.98	.94	.90	.95	.91	.88	.92	.89	.86	.89	.87	.84	.83
3.0	.91	.85	.81	.90	.84	.80	.87	.83	.79	.85	.81	.78	.82	.79	.76	.75
4.0	.84	.77	.72	.82	.76	.72	.80	.75	.71	.78	.74	.70	.76	.72	.69	.67
5.0	.77	.70	.65	.76	.69	.64	.74	.68	.64	.72	.67	.63	.70	.66	.63	.61
6.0	.71	.64	.59	.70	.63	.58	.68	.62	.58	.67	.61	.57	.65	.61	.57	.55
7.0	.65	.58	.53	.65	.58	.53	.63	.57	.53	.62	.56	.52	.61	.56	.52	.50
8.0	.60	.53	.49	.60	.53	.48	.59	.53	.48	.57	.52	.48	.56	.51	.48	.46
9.0	.56	.49	.45	.56	.49	.44	.55	.49	.44	.54	.48	.44	.53	.48	.44	.42
10.0	.52	.46	.41	.52	.45	.41	.51	.45	.41	.50	.45	.41	.49	.44	.41	.39



C Range: 0 - 360DEG
 C Interval: 15.0DEG
 Test Speed: HIGH
 Temperature:25.3DEG
 Operators:YU
 Test Date:2018-07-18

γ Range: 0 - 180DEG
 γ Interval: 1.0DEG
 Test System:EVERFINE GO-2000B_V1 SYSTEM V2.0.287
 Humidity:65.0%
 Test Distance:8.000m [K=1.0800]
 Remarks:

WEC AND CCEC

Test:U:221.1V I:0.1850A P:40.10W PF:0.9760 Lamp Flux:5679.62x1 lm		
NAME:LED Module panel light 6060 40W(S)	TYPE:	WEIGHT:
SPEC.:AC-MP6060-40WS	DIM.:	SERIAL No.:
MFR.:	SUR.:	PROTECTION ANGLE:

ρcc	80%			70%			50%			30%			10%			0
ρw	50%	30%	10%	50%	30%	10%	50%	30%	10%	50%	30%	10%	50%	30%	10%	0
ρfc	20%			20%			20%			20%			20%			0
RCR	RCR:Room Cavity Ratio						Wall Exitance Coefficients (WEC)									
0.0																
1.0	.205	.117	.037	.198	.113	.036	.185	.106	.034	.174	.100	.032	.163	.094	.030	
2.0	.201	.110	.034	.195	.107	.033	.184	.102	.032	.174	.097	.031	.164	.093	.029	
3.0	.193	.103	.031	.188	.101	.030	.178	.097	.029	.170	.093	.029	.162	.089	.028	
4.0	.185	.096	.028	.180	.094	.028	.172	.091	.027	.164	.088	.027	.157	.085	.026	
5.0	.176	.090	.026	.172	.088	.026	.165	.086	.025	.158	.083	.025	.152	.081	.024	
6.0	.168	.084	.024	.164	.083	.024	.158	.081	.024	.152	.079	.023	.146	.077	.023	
7.0	.160	.079	.022	.157	.078	.022	.151	.076	.022	.146	.075	.022	.140	.073	.021	
8.0	.152	.074	.021	.150	.074	.021	.144	.072	.021	.140	.071	.020	.135	.069	.020	
9.0	.145	.070	.020	.143	.070	.020	.138	.068	.019	.134	.067	.019	.130	.066	.019	
10.0	.139	.067	.018	.137	.066	.018	.132	.065	.018	.128	.064	.018	.124	.063	.018	

ρcc	80%			70%			50%			30%			10%			0
ρw	50%	30%	10%	50%	30%	10%	50%	30%	10%	50%	30%	10%	50%	30%	10%	0
ρfc	20%			20%			20%			20%			20%			0
RCR	RCR:Room Cavity Ratio						Ceiling Cavity Exitance Coefficients (CCEC)									
0.0	.191	.191	.191	.163	.163	.163	.112	.112	.112	.064	.064	.064	.020	.020	.020	
1.0	.174	.158	.143	.149	.135	.123	.102	.093	.085	.059	.054	.050	.019	.017	.016	
2.0	.161	.133	.110	.138	.115	.095	.094	.079	.066	.054	.046	.039	.017	.015	.013	
3.0	.150	.115	.086	.129	.099	.075	.089	.069	.052	.051	.040	.031	.016	.013	.010	
4.0	.142	.100	.069	.122	.087	.060	.084	.060	.042	.048	.035	.025	.016	.012	.008	
5.0	.134	.089	.056	.115	.077	.049	.079	.054	.034	.046	.032	.020	.015	.010	.007	
6.0	.127	.080	.047	.110	.070	.041	.076	.049	.029	.044	.029	.017	.014	.009	.006	
7.0	.121	.073	.039	.104	.063	.034	.072	.044	.024	.042	.026	.014	.014	.009	.005	
8.0	.116	.067	.034	.100	.058	.029	.069	.041	.021	.040	.024	.012	.013	.008	.004	
9.0	.111	.062	.029	.096	.054	.026	.066	.038	.018	.039	.022	.011	.012	.007	.004	
10.0	.106	.058	.026	.092	.050	.023	.064	.035	.016	.037	.021	.010	.012	.007	.003	

C Range: 0 - 360DEG
 C Interval: 15.0DEG
 Test Speed: HIGH
 Temperature:25.3DEG
 Operators:YU
 Test Date:2018-07-18

γ Range: 0 - 180DEG
 γ Interval: 1.0DEG
 Test System:EVERFINE GO-2000B_V1 SYSTEM V2.0.287
 Humidity:65.0%
 Test Distance:8.000m [K=1.0800]
 Remarks:

UGR(Unified Glare Rating) Table

Test:U:221.1V I:0.1850A P:40.10W PF:0.9760 Lamp Flux:5679.62x1 lm										
NAME:LED Module panel light 6060 40W(S)					TYPE:			WEIGHT:		
SPEC.:AC-MP6060-40WS					DIM.:			SERIAL No.:		
MFR.:					SUR.:			PROTECTION ANGLE:		
ceiling/cavity	0.7	0.7	0.5	0.5	0.3	0.7	0.7	0.5	0.5	0.3
walls	0.5	0.3	0.5	0.3	0.3	0.5	0.3	0.5	0.3	0.3
working plane	0.2	0.2	0.2	0.2	0.2	0.2	0.2	0.2	0.2	0.2
Room dimensions	Viewed crosswise					Viewed endwise				
x = 2H y = 2H	12.4	13.6	12.7	13.7	13.9	14.5	15.6	14.7	15.8	16.0
3H	12.2	13.3	12.5	13.5	13.7	14.3	15.4	14.6	15.6	15.8
4H	12.1	13.1	12.4	13.3	13.6	14.2	15.2	14.5	15.4	15.7
6H	12.0	13.0	12.3	13.2	13.5	14.1	15.0	14.4	15.3	15.6
8H	12.0	12.9	12.3	13.1	13.4	14.1	15.0	14.4	15.2	15.5
12H	11.9	12.8	12.3	13.1	13.4	14.0	14.9	14.4	15.1	15.4
4H 2H	12.3	13.3	12.6	13.5	13.7	14.2	15.2	14.5	15.5	15.7
3H	12.1	12.9	12.4	13.2	13.5	14.1	14.9	14.4	15.2	15.5
4H	12.0	12.8	12.3	13.1	13.4	14.0	14.7	14.3	15.0	15.3
6H	11.9	12.6	12.3	12.9	13.3	13.9	14.5	14.2	14.9	15.2
8H	11.8	12.5	12.2	12.8	13.2	13.8	14.4	14.2	14.8	15.2
12H	11.8	12.4	12.2	12.7	13.1	13.8	14.3	14.2	14.7	15.1
8H 4H	11.8	12.5	12.2	12.8	13.2	13.8	14.4	14.2	14.8	15.2
6H	11.8	12.3	12.2	12.7	13.1	13.7	14.2	14.2	14.6	15.0
8H	11.7	12.1	12.2	12.6	13.0	13.7	14.1	14.1	14.5	15.0
12H	11.7	12.0	12.1	12.5	13.0	13.6	14.0	14.1	14.4	14.9
12H 4H	11.8	12.4	12.2	12.7	13.1	13.8	14.3	14.2	14.7	15.1
6H	11.7	12.1	12.2	12.6	13.0	13.7	14.1	14.1	14.5	15.0
8H	11.7	12.0	12.1	12.5	13.0	13.6	14.0	14.1	14.4	14.9
Variations with the observer position at spacings:										
S = 1.0H	+ 2.6 / -13.6					+ 2.0 / - 3.0				
1.5H	+ 2.7 / - 6.5					+ 1.1 / - 2.2				
2.0H	+ 5.6 / -19.6					+ 3.4 / -13.3				

CIE Pub.117 Corrected 5680 lm Total Lamp Luminous Flux. (8log(F/F0) = 6.0)

C Range: 0 - 360DEG
 C Interval: 15.0DEG
 Test Speed: HIGH
 Temperature:25.3DEG
 Operators:YU
 Test Date:2018-07-18

γ Range: 0 - 180DEG
 γ Interval: 1.0DEG
 Test System:EVERFINE GO-2000B_V1 SYSTEM V2.0.287
 Humidity:65.0%
 Test Distance:8.000m [K=1.0800]
 Remarks:

UTILIZATION FACTORS TABLE

Test:U:221.1V I:0.1850A P:40.10W PF:0.9760 Lamp Flux:5679.62x1 lm		
NAME:LED Module panel light 6060 40W(S)	TYPE:	WEIGHT:
SPEC.:AC-MP6060-40WS	DIM.:	SERIAL No.:
MFR.:	SUR.:	PROTECTION ANGLE:

REFLECTANCE										
Ceiling	0.8	0.8	0.8	0.7	0.7	0.7	0.5	0.5	0.5	0
Walls	0.7	0.5	0.3	0.7	0.5	0.3	0.7	0.5	0.3	0
Working plane	0.2	0.2	0.2	0.2	0.2	0.2	0.2	0.2	0.2	0
ROOM INDEX	UTILIZATION FACTORS (PERCENT) $k(RI) \times RCR = 5$									
k = 0.60	75	67	62	75	67	62	74	66	62	57
0.80	85	77	72	84	77	72	83	76	71	66
1.00	92	85	80	91	84	80	89	84	79	74
1.25	97	91	86	96	90	86	94	89	85	80
1.50	101	95	91	100	94	90	97	93	89	84
2.00	105	100	96	104	99	95	101	97	94	88
2.50	107	103	99	106	101	98	102	99	96	90
3.00	109	105	102	108	104	101	104	101	99	92
4.00	112	108	105	110	107	104	106	103	101	94
5.00	113	110	108	111	108	106	107	105	103	95
ROOM INDEX	UF(total)									Direct
According to DIN EN 13032-2 2004			Suspended				SHRNOM = 1.25			

C Range: 0 - 360DEG
 C Interval: 15.0DEG
 Test Speed: HIGH
 Temperature:25.3DEG
 Operators:YU
 Test Date:2018-07-18

γ Range: 0 - 180DEG
 γ Interval: 1.0DEG
 Test System:EVERFINE GO-2000B_V1 SYSTEM V2.0.287
 Humidity:65.0%
 Test Distance:8.000m [K=1.0800]
 Remarks:

ISOCANDELA DIAGRAM

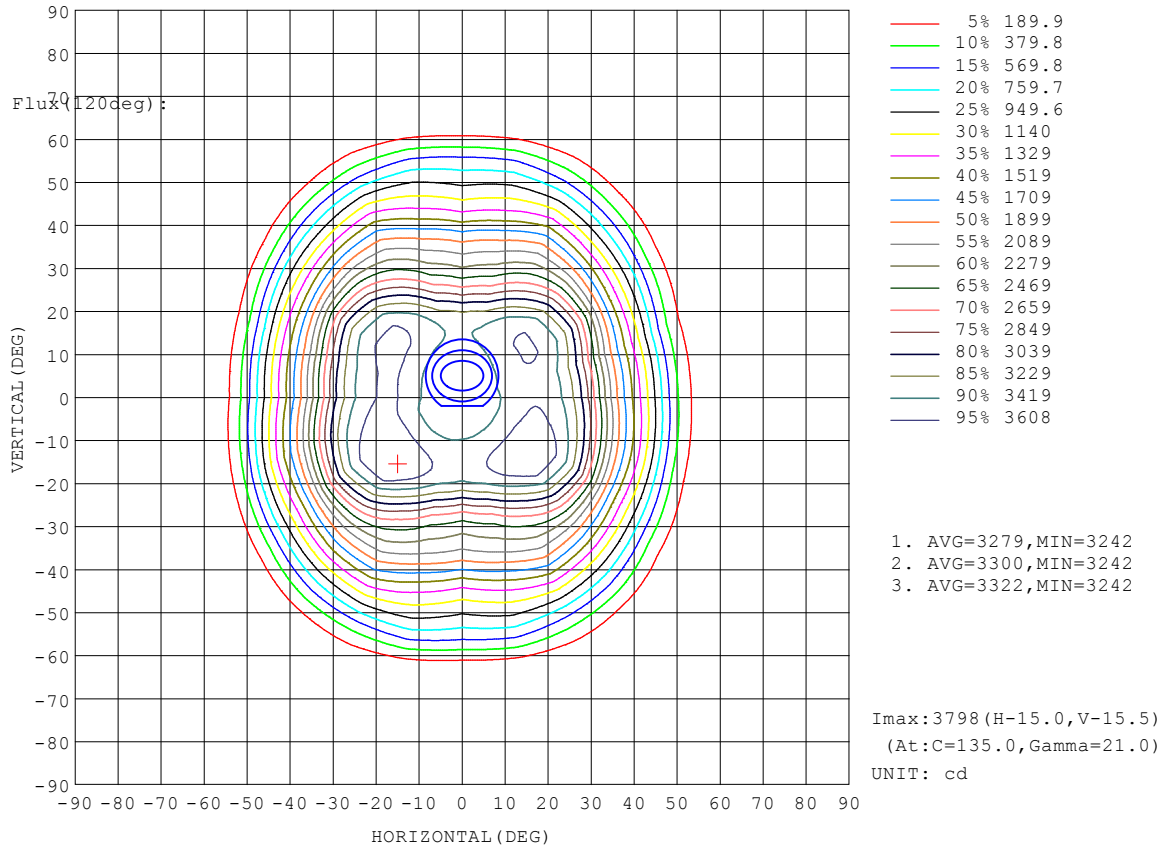
Test:U:221.1V I:0.1850A P:40.10W PF:0.9760 Lamp Flux:5679.62x1 lm		
NAME:LED Module panel light 6060 40W(S)	TYPE:	WEIGHT:
SPEC.:AC-MP6060-40WS	DIM.:	SERIAL No.:
MFR.:	SUR.:	PROTECTION ANGLE:

Conical surface Flux(90deg):

4833 lm
 %lum = 85.1%
 %lamp = 85.1%

Conical surface Flux(20deg):

5633 lm
 %lum = 99.2%
 %lamp = 99.2%

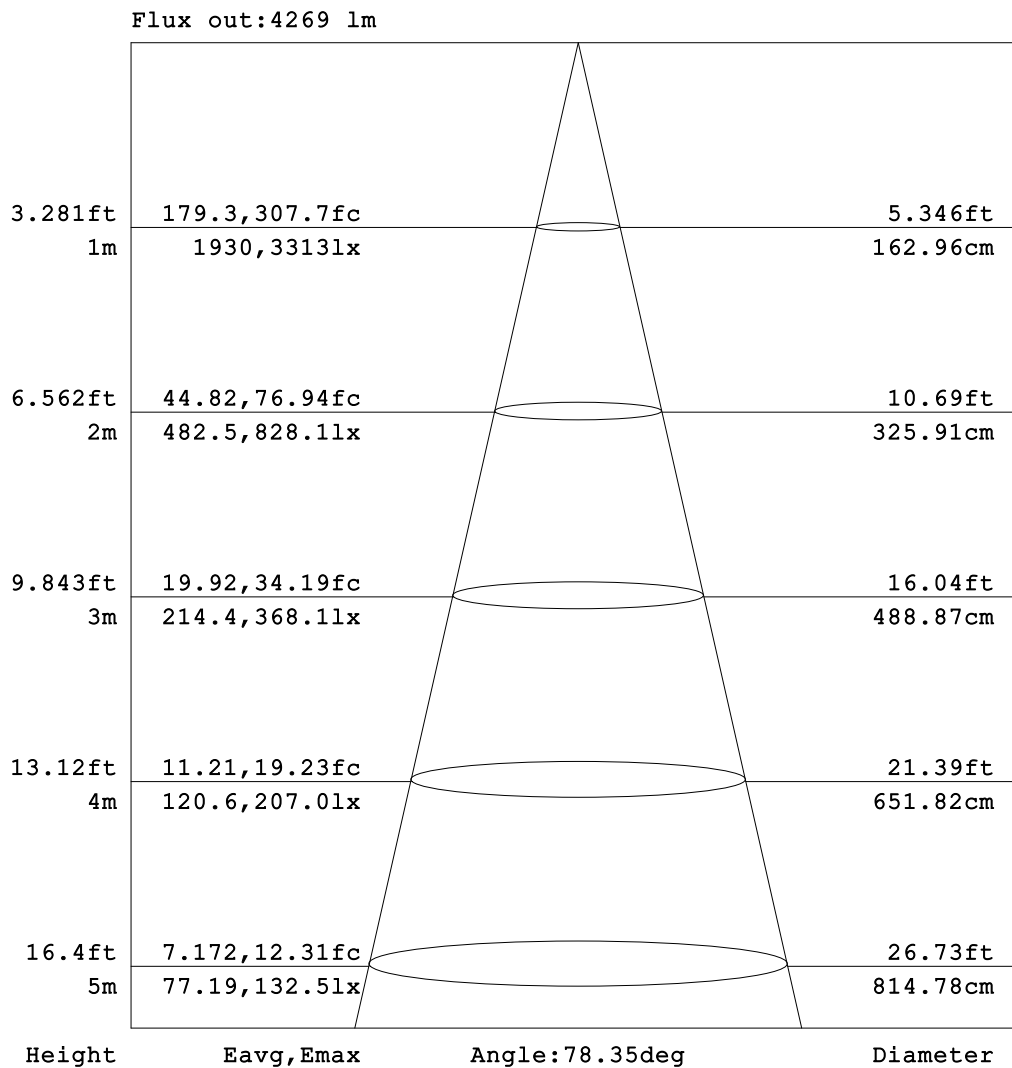


C Range: 0 - 360DEG
 C Interval: 15.0DEG
 Test Speed: HIGH
 Temperature:25.3DEG
 Operators:YU
 Test Date:2018-07-18

γ Range: 0 - 180DEG
 γ Interval: 1.0DEG
 Test System:EVERFINE GO-2000B_V1 SYSTEM V2.0.287
 Humidity:65.0%
 Test Distance:8.000m [K=1.0800]
 Remarks:

AAI Figure

Test:U:221.1V I:0.1850A P:40.10W PF:0.9760 Lamp Flux:5679.62x1 lm		
NAME:LED Module panel light 6060 40W(S)	TYPE:	WEIGHT:
SPEC.:AC-MP6060-40WS	DIM.:	SERIAL No.:
MFR.:	SUR.:	PROTECTION ANGLE:



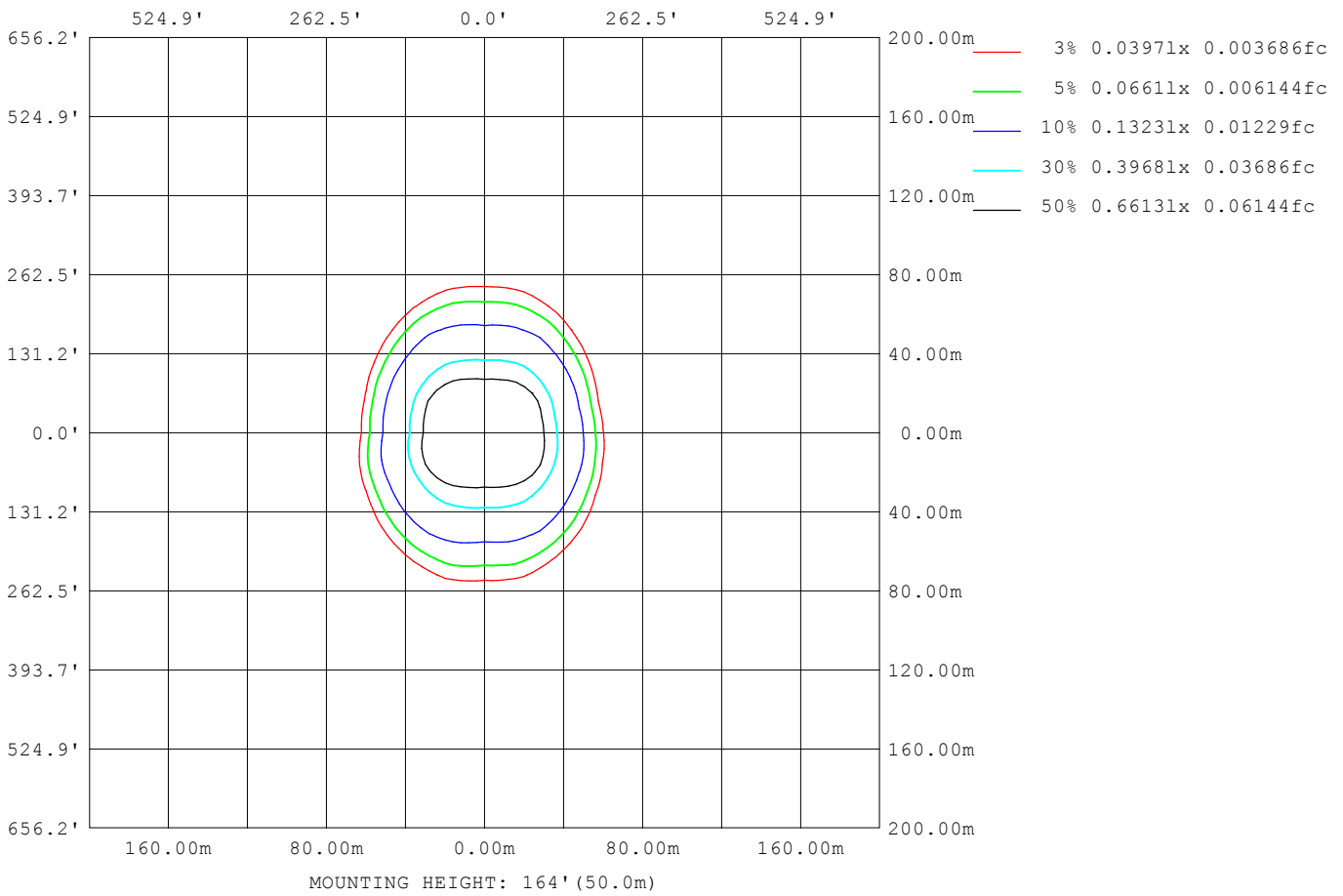
Note:The Curves indicate the illuminated area and the average illumination when the luminaire is at different distance.

C Range: 0 - 360DEG
 C Interval: 15.0DEG
 Test Speed: HIGH
 Temperature:25.3DEG
 Operators:YU
 Test Date:2018-07-18

γ Range: 0 - 180DEG
 γ Interval: 1.0DEG
 Test System:EVERFINE GO-2000B_V1 SYSTEM V2.0.287
 Humidity:65.0%
 Test Distance:8.000m [K=1.0800]
 Remarks:

ISOLUX DIAGRAM

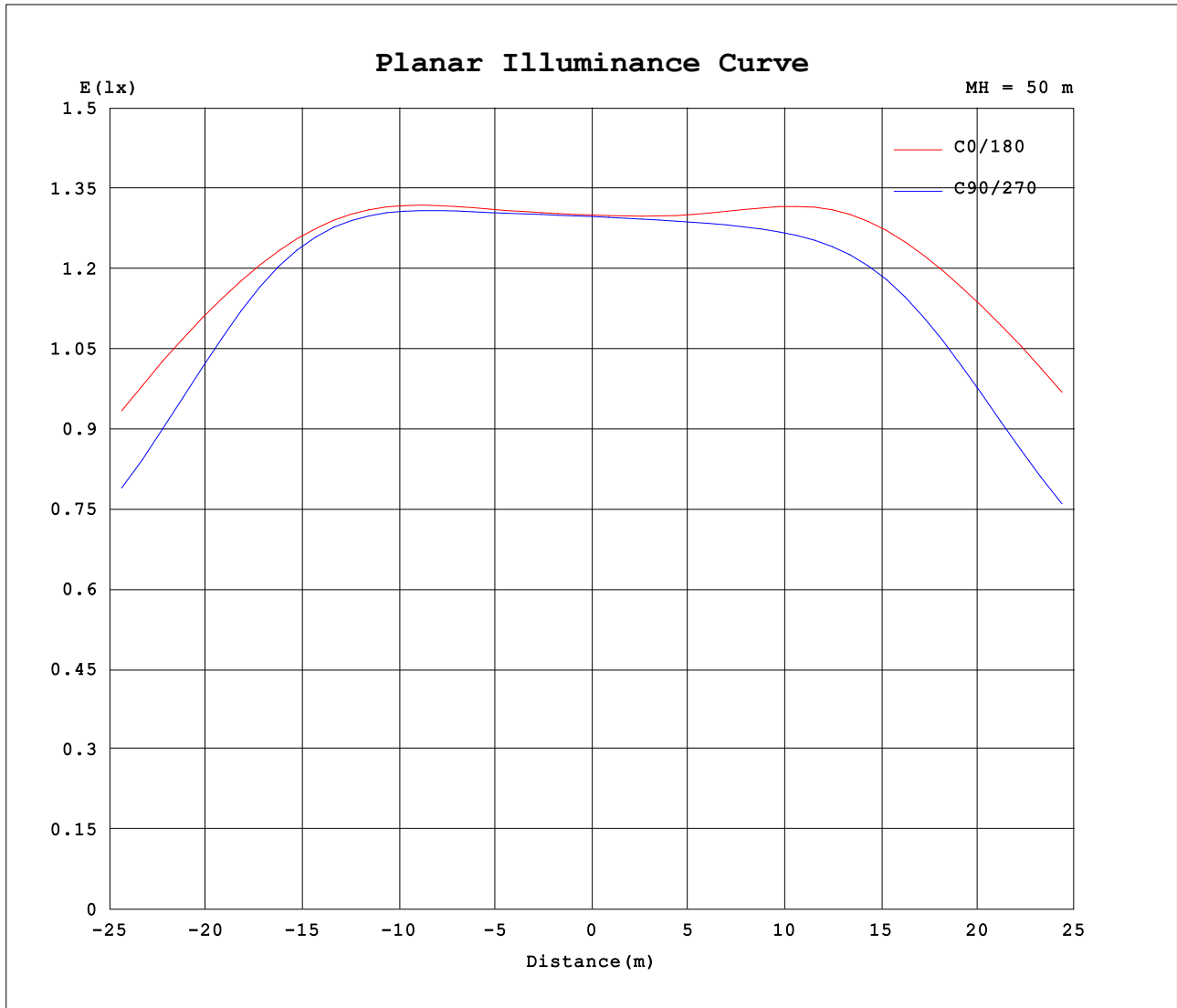
Test:U:221.1V I:0.1850A P:40.10W PF:0.9760 Lamp Flux:5679.62x1 lm		
NAME:LED Module panel light 6060 40W(S)	TYPE:	WEIGHT:
SPEC.:AC-MP6060-40WS	DIM.:	SERIAL No.:
MFR.:	SUR.:	PROTECTION ANGLE:



C Range: 0 - 360DEG
 C Interval: 15.0DEG
 Test Speed: HIGH
 Temperature:25.3DEG
 Operators:YU
 Test Date:2018-07-18

γ Range: 0 - 180DEG
 γ Interval: 1.0DEG
 Test System:EVERFINE GO-2000B_V1 SYSTEM V2.0.287
 Humidity:65.0%
 Test Distance:8.000m [K=1.0800]
 Remarks:

Planar Illuminance Curve



C Range: 0 - 360DEG
 C Interval: 15.0DEG
 Test Speed: HIGH
 Temperature: 25.3DEG
 Operators: YU
 Test Date: 2018-07-18

γ Range: 0 - 180DEG
 γ Interval: 1.0DEG
 Test System: EVERFINE GO-2000B_V1 SYSTEM V2.0.287
 Humidity: 65.0%
 Test Distance: 8.000m [K=1.0800]
 Remarks:

LUMINOUS DISTRIBUTION INTENSITY DATA

Test:U:221.1V I:0.1850A P:40.10W PF:0.9760 Lamp Flux:5679.62x1 lm		
NAME:LED Module panel light 6060 40W(S)	TYPE:	WEIGHT:
SPEC.:AC-MP6060-40WS	DIM.:	SERIAL No.:
MFR.:	SUR.:	PROTECTION ANGLE:

Table--1

UNIT: cd

C (DEG) γ (DEG)	0	15	30	45	60	75	90	105	120	135	150	165	180	195	210	225	240	255	270
0	3251	3248	3247	3247	3246	3245	3244	3244	3245	3246	3248	3250	3251	3248	3247	3247	3246	3245	3244
5	3310	3308	3312	3309	3309	3301	3298	3290	3286	3278	3274	3266	3286	3280	3270	3265	3258	3258	3260
10	3452	3454	3462	3456	3451	3434	3425	3412	3411	3404	3408	3395	3439	3428	3400	3376	3344	3334	3335
15	3580	3602	3645	3653	3625	3572	3544	3547	3590	3618	3623	3595	3611	3600	3585	3548	3476	3417	3401
20	3547	3621	3736	3765	3639	3466	3377	3462	3647	3790	3773	3677	3605	3613	3664	3653	3498	3289	3210
25	3295	3445	3635	3609	3282	2968	2830	2987	3348	3704	3725	3563	3403	3437	3556	3516	3214	2847	2718
30	2757	2978	3240	3122	2757	2487	2373	2505	2834	3267	3439	3234	2941	3020	3218	3084	2748	2413	2292
35	2036	2258	2508	2490	2364	2205	2105	2224	2431	2660	2817	2591	2219	2320	2570	2504	2338	2094	1977
40	1475	1637	1733	1903	2003	1838	1705	1871	2082	2083	2004	1883	1605	1684	1819	1925	1951	1717	1581
45	929	1076	1165	1359	1521	1391	1269	1429	1625	1541	1365	1318	1062	1133	1241	1376	1503	1323	1195
50	402	495	642	857	1028	1053	967	1094	1143	1002	825	712	507	551	710	867	1046	1006	905
55	118	148	230	414	571	706	662	752	661	517	328	234	145	158	253	413	581	670	627
60	24.0	33.1	50.2	107	216	292	263	321	252	145	67.7	43.5	24.4	27.5	49.4	103	215	260	240
65	4.77	5.07	6.03	13.6	27.9	35.3	28.9	40.6	35.7	20.1	9.29	6.65	5.75	6.26	7.73	15.0	32.5	41.2	40.2
70	2.39	2.48	2.89	3.39	4.34	5.36	5.36	5.73	4.66	4.24	3.76	3.50	3.12	3.58	4.09	4.61	6.90	9.00	9.46
75	1.53	1.61	1.91	2.25	2.77	3.04	3.12	3.12	2.96	2.58	2.36	2.14	1.92	2.24	2.50	2.80	3.43	4.10	4.06
80	1.22	1.38	1.53	1.80	2.17	2.40	2.59	2.50	2.30	1.95	1.73	1.48	1.37	1.45	1.63	1.93	2.17	2.57	2.48
85	1.50	1.60	1.79	2.13	2.36	2.56	2.62	2.59	2.40	2.18	1.77	1.56	1.27	1.31	1.54	1.77	2.01	2.16	2.19
90	2.56	2.66	2.95	3.30	3.57	3.72	3.75	3.68	3.46	3.20	2.77	2.37	1.91	2.02	2.33	2.62	2.94	3.09	3.22
95	4.38	4.46	4.82	5.31	5.51	5.72	5.83	5.61	5.38	5.07	4.59	4.04	3.25	3.51	3.88	4.31	4.58	4.84	5.02
100	6.70	6.89	7.16	7.57	7.85	7.98	8.09	7.96	7.61	7.38	6.81	6.31	5.18	5.38	5.89	6.35	6.57	6.79	7.01
105	0.00	0.00	0.00	0.00	0.00	0.00	0.00	0.00	0.00	0.00	0.00	0.00	0.00	0.00	0.00	0.00	0.00	0.00	0.00
110	0.00	0.00	0.00	0.00	0.00	0.00	0.00	0.00	0.00	0.00	0.00	0.00	0.00	0.00	0.00	0.00	0.00	0.00	0.00
115	0.00	0.00	0.00	0.00	0.00	0.00	0.00	0.00	0.00	0.00	0.00	0.00	0.00	0.00	0.00	0.00	0.00	0.00	0.00
120	0.00	0.00	0.00	0.00	0.00	0.00	0.00	0.00	0.00	0.00	0.00	0.00	0.00	0.00	0.00	0.00	0.00	0.00	0.00
125	0.00	0.00	0.00	0.00	0.00	0.00	0.00	0.00	0.00	0.00	0.00	0.00	0.00	0.00	0.00	0.00	0.00	0.00	0.00
130	0.00	0.00	0.00	0.00	0.00	0.00	0.00	0.00	0.00	0.00	0.00	0.00	0.00	0.00	0.00	0.00	0.00	0.00	0.00
135	0.00	0.00	0.00	0.00	0.00	0.00	0.00	0.00	0.00	0.00	0.00	0.00	0.00	0.00	0.00	0.00	0.00	0.00	0.00
140	0.00	0.00	0.00	0.00	0.00	0.00	0.00	0.00	0.00	0.00	0.00	0.00	0.00	0.00	0.00	0.00	0.00	0.00	0.00
145	0.00	0.00	0.00	0.00	0.00	0.00	0.00	0.00	0.00	0.00	0.00	0.00	0.00	0.00	0.00	0.00	0.00	0.00	0.00
150	0.00	0.00	0.00	0.00	0.00	0.00	0.00	0.00	0.00	0.00	0.00	0.00	0.00	0.00	0.00	0.00	0.00	0.00	0.00
155	0.00	0.00	0.00	0.00	0.00	0.00	0.00	0.00	0.00	0.00	0.00	0.00	0.00	0.00	0.00	0.00	0.00	0.00	0.00
160	0.00	0.00	0.00	0.00	0.00	0.00	0.00	0.00	0.00	0.00	0.00	0.00	0.00	0.00	0.00	0.00	0.00	0.00	0.00
165	0.00	0.00	0.00	0.00	0.00	0.00	0.00	0.00	0.00	0.00	0.00	0.00	0.00	0.00	0.00	0.00	0.00	0.00	0.00
170	0.00	0.00	0.00	0.00	0.00	0.00	0.00	0.00	0.00	0.00	0.00	0.00	0.00	0.00	0.00	0.00	0.00	0.00	0.00
175	0.00	0.00	0.00	0.00	0.00	0.00	0.00	0.00	0.00	0.00	0.00	0.00	0.00	0.00	0.00	0.00	0.00	0.00	0.00
180	0.00	0.00	0.00	0.00	0.00	0.00	0.00	0.00	0.00	0.00	0.00	0.00	0.00	0.00	0.00	0.00	0.00	0.00	0.00

C Range: 0 - 360DEG
 C Interval: 15.0DEG
 Test Speed: HIGH
 Temperature:25.3DEG
 Operators:YU
 Test Date:2018-07-18

γ Range: 0 - 180DEG
 γ Interval: 1.0DEG
 Test System:EVERFINE GO-2000B_V1 SYSTEM V2.0.287
 Humidity:65.0%
 Test Distance:8.000m [K=1.0800]
 Remarks:

LUMINOUS DISTRIBUTION INTENSITY DATA

Test:U:221.1V I:0.1850A P:40.10W PF:0.9760 Lamp Flux:5679.62x1 lm		
NAME:LED Module panel light 6060 40W(S)	TYPE:	WEIGHT:
SPEC.:AC-MP6060-40WS	DIM.:	SERIAL No.:
MFR.:	SUR.:	PROTECTION ANGLE:

Table--2

UNIT: cd

C (DEG) \ γ (DEG)	285	300	315	330	345														
0	3244	3245	3246	3248	3250														
5	3268	3278	3294	3306	3322														
10	3352	3376	3416	3442	3468														
15	3431	3500	3567	3585	3580														
20	3278	3478	3623	3616	3534														
25	2818	3137	3422	3454	3277														
30	2391	2663	2937	3010	2728														
35	2074	2267	2327	2276	2014														
40	1685	1867	1740	1572	1449														
45	1288	1392	1199	1039	884														
50	969	935	728	532	360														
55	639	510	317	172	101														
60	243	178	74.5	35.9	17.7														
65	37.3	26.2	10.3	5.41	4.40														
70	8.54	5.94	3.69	2.99	2.62														
75	3.86	2.97	2.34	1.92	1.68														
80	2.45	1.96	1.71	1.43	1.27														
85	2.14	2.06	1.82	1.62	1.37														
90	3.22	3.13	2.90	2.70	2.39														
95	4.98	4.88	4.62	4.34	3.94														
100	6.84	6.81	6.57	6.45	6.02														
105	0.00	0.00	0.00	0.00	0.00														
110	0.00	0.00	0.00	0.00	0.00														
115	0.00	0.00	0.00	0.00	0.00														
120	0.00	0.00	0.00	0.00	0.00														
125	0.00	0.00	0.00	0.00	0.00														
130	0.00	0.00	0.00	0.00	0.00														
135	0.00	0.00	0.00	0.00	0.00														
140	0.00	0.00	0.00	0.00	0.00														
145	0.00	0.00	0.00	0.00	0.00														
150	0.00	0.00	0.00	0.00	0.00														
155	0.00	0.00	0.00	0.00	0.00														
160	0.00	0.00	0.00	0.00	0.00														
165	0.00	0.00	0.00	0.00	0.00														
170	0.00	0.00	0.00	0.00	0.00														
175	0.00	0.00	0.00	0.00	0.00														
180	0.00	0.00	0.00	0.00	0.00														

C Range: 0 - 360DEG
 C Interval: 15.0DEG
 Test Speed: HIGH
 Temperature:25.3DEG
 Operators:YU
 Test Date:2018-07-18

γ Range: 0 - 180DEG
 γ Interval: 1.0DEG
 Test System:EVERFINE GO-2000B_V1 SYSTEM V2.0.287
 Humidity:65.0%
 Test Distance:8.000m [K=1.0800]
 Remarks: