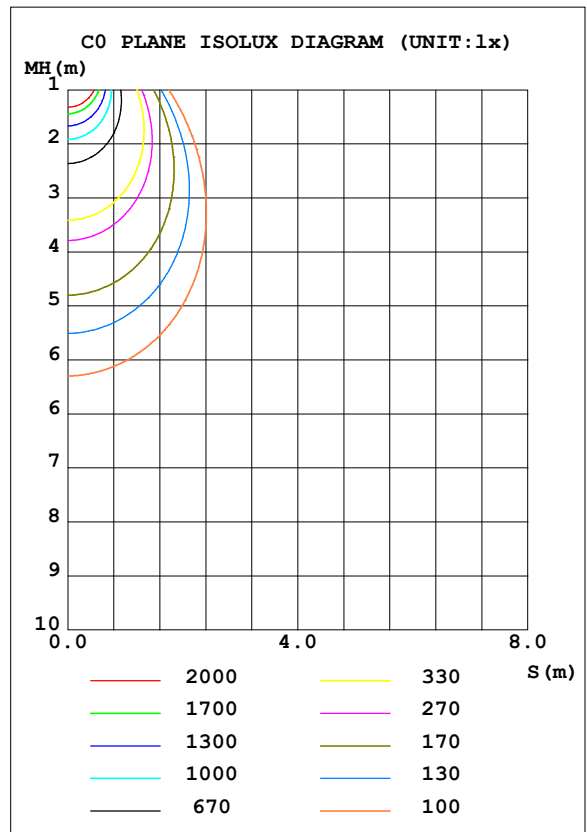
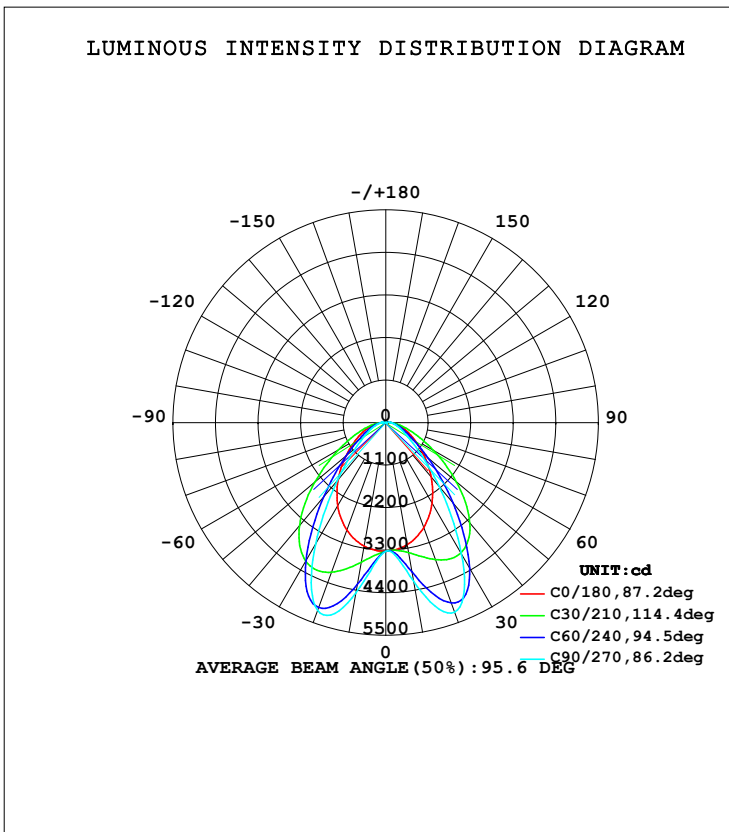


LUMINAIRE PHOTOMETRIC TEST REPORT

Test:U:220.3V I:0.3350A P:71.90W PF:0.9720 Lamp Flux:11694.1x1 lm		
NAME: trunking system 1.5m 72w	TYPE:	WEIGHT:
SPEC.:	DIM.:	SERIAL No.:
MFR.:	SUR.:	PROTECTION ANGLE:

DATA OF LAMP		PHOTOMETRIC DATA Eff: 134.28 lm/W			
MODEL		I _{max} (cd)	5224	S/MH (C0/180)	1.13
NOMINAL POWER (W)		LOR (%)	82.6	S/MH (C90/270)	1.21
RATED VOLTAGE (V)		TOTAL FLUX (lm)	9654.6	η UP, DN (C0-180)	0.5, 41.2
NOMINAL FLUX (lm)	11694.1	CIE CLASS	DIRECT	η UP, DN (C180-360)	0.4, 40.5
LAMPS INSIDE	1	η up (%)	0.9	CIBSE SHR NOM	0.75
TEST VOLTAGE (V)		η down (%)	81.7	CIBSE SHR MAX	0.75



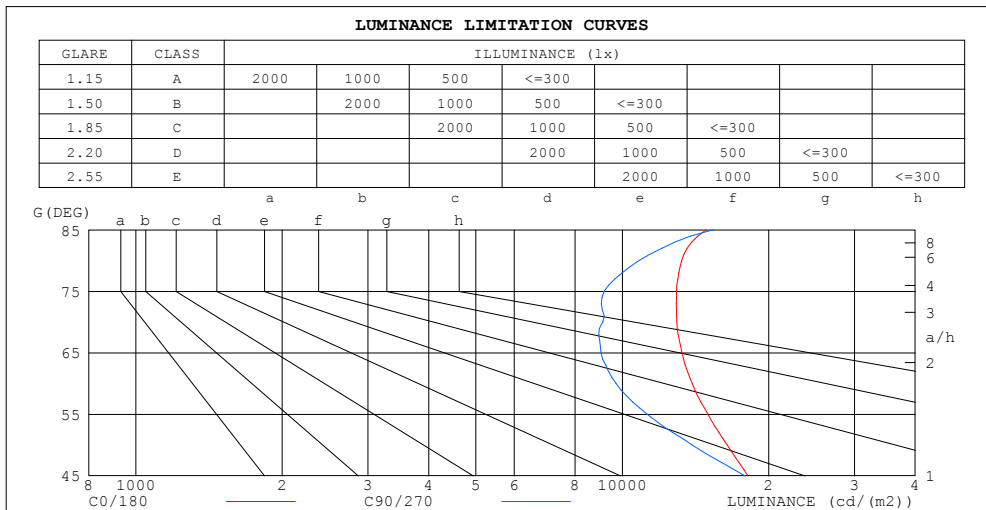
C Range: 0 - 360DEG
 C Interval: 15.0DEG
 Test Speed: HIGH
 Temperature: 25.3DEG
 Operators: senpuguangxue
 Test Date: 2016-11-17

γ Range: 0 - 180DEG
 γ Interval: 1.0DEG
 Test System: EVERFINE GO-2000B_V1 SYSTEM V2.0.287
 Humidity: 65.0%
 Test Distance: 8.000m [K=1.0000]
 Remarks:

**ZONAL FLUX DIAGRAM
AND LUMINANCE LIMITATION CURVES**

ZONAL FLUX DIAGRAM:

γ	C0	C45	C90	C135	C180	C225	C270	C315	γ	Φ zone	Φ total	%lum, lamp
10	3204	3659	4163	3686	3241	3984	4465	3912	0- 10	340.8	340.8	3.53,2.91
20	2883	4479	5212	4512	2952	4769	5163	4666	10- 20	1176	1517	15.7,13
30	2399	4479	3920	4533	2490	4432	3637	4387	20- 30	1909	3426	35.5,29.3
40	1827	3322	2151	3402	1917	3137	1954	3137	30- 40	2011	5437	56.3,46.5
50	1267	1997	1073	2080	1349	1865	1017	1869	40- 50	1634	7071	73.2,60.5
60	835.1	1088	582.1	1145	890.5	1032	571.6	1031	50- 60	1132	8203	85,70.1
70	531.0	600.7	374.5	630.7	567.9	570.2	350.5	564.6	60- 70	721.4	8925	92.4,76.3
80	276.1	317.1	225.7	336.3	302.5	296.1	204.6	285.1	70- 80	427.5	9352	96.9,80
90	65.60	116.3	124.7	120.7	60.74	100.4	92.42	101.6	80- 90	198.7	9551	98.9,81.7
100	71.42	101.7	105.9	99.26	59.83	89.15	115.1	91.28	90-100	98.86	9650	99.9,82.5
110	0	0	0	0	0	0	0	0	100-110	5.008	9655	100,82.6
120	0	0	0	0	0	0	0	0	110-120	0	9655	100,82.6
130	0	0	0	0	0	0	0	0	120-130	0	9655	100,82.6
140	0	0	0	0	0	0	0	0	130-140	0	9655	100,82.6
150	0	0	0	0	0	0	0	0	140-150	0	9655	100,82.6
160	0	0	0	0	0	0	0	0	150-160	0	9655	100,82.6
170	0	0	0	0	0	0	0	0	160-170	0	9655	100,82.6
180	0	0	0	0	0	0	0	0	170-180	0	9655	100,82.6
DEG	LUMINOUS INTENSITY:cd									UNIT:lm		



LUMINANCE cd/(m2)		
G (DEG)	C0/180	C90/270
85	14874	15382
80	13251	10831
75	12933	9179
70	12938	9125
65	13266	9045
60	13919	9702
55	15000	11254
50	16427	13907
45	18135	17892

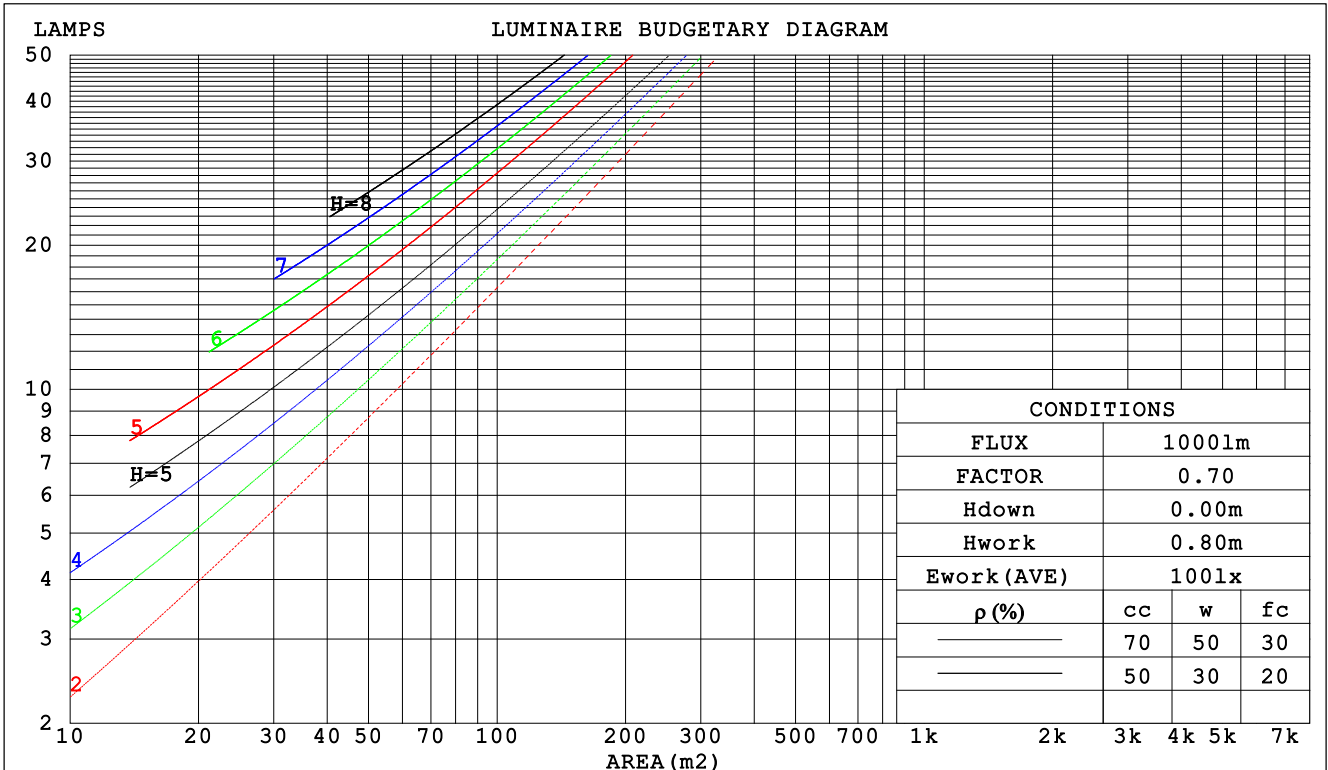
C Range: 0 - 360DEG
 C Interval: 15.0DEG
 Test Speed: HIGH
 Temperature:25.3DEG
 Operators:senpuguangxue
 Test Date:2016-11-17

γ Range: 0 - 180DEG
 γ Interval: 1.0DEG
 Test System:EVERFINE GO-2000B_V1 SYSTEM V2.0.287
 Humidity:65.0%
 Test Distance:8.000m [K=1.0000]
 Remarks:

CU AND LUMINAIRE BUDGETARY ESTIMATE DIAGRAM

Test:U:220.3V I:0.3350A P:71.90W PF:0.9720 Lamp Flux:11694.1x1 lm		
NAME: trunking system 1.5m 72w	TYPE:	WEIGHT:
SPEC.:	DIM.:	SERIAL No.:
MFR.:	SUR.:	PROTECTION ANGLE:

ρcc	80%			70%			50%			30%			10%			0
ρw	50%	30%	10%	50%	30%	10%	50%	30%	10%	50%	30%	10%	50%	30%	10%	0
ρfc	20%			20%			20%			20%			20%			0
RCR	RCR:Room Cavity Ratio						Coefficients of Utilization(CU)									
0.0	.98	.98	.98	.96	.96	.96	.91	.91	.91	.87	.87	.87	.83	.83	.83	.82
1.0	.87	.84	.81	.85	.82	.79	.81	.79	.77	.78	.76	.74	.75	.73	.72	.70
2.0	.77	.72	.68	.76	.71	.67	.72	.69	.65	.70	.66	.64	.67	.64	.62	.60
3.0	.69	.63	.58	.67	.62	.57	.65	.60	.56	.63	.59	.55	.60	.57	.54	.52
4.0	.62	.55	.50	.61	.55	.50	.59	.53	.49	.57	.52	.48	.55	.51	.48	.46
5.0	.56	.49	.44	.55	.48	.44	.53	.47	.43	.51	.46	.43	.50	.46	.42	.40
6.0	.51	.44	.39	.50	.43	.39	.48	.43	.38	.47	.42	.38	.46	.41	.38	.36
7.0	.46	.40	.35	.46	.39	.35	.44	.39	.34	.43	.38	.34	.42	.37	.34	.32
8.0	.43	.36	.31	.42	.36	.31	.41	.35	.31	.40	.35	.31	.39	.34	.31	.29
9.0	.39	.33	.28	.39	.33	.28	.38	.32	.28	.37	.32	.28	.36	.31	.28	.26
10.0	.36	.30	.26	.36	.30	.26	.35	.30	.26	.34	.29	.26	.33	.29	.25	.24



C Range: 0 - 360DEG
 C Interval: 15.0DEG
 Test Speed: HIGH
 Temperature:25.3DEG
 Operators:senpuguangxue
 Test Date:2016-11-17

γ Range: 0 - 180DEG
 γ Interval: 1.0DEG
 Test System:EVERFINE GO-2000B_V1 SYSTEM V2.0.287
 Humidity:65.0%
 Test Distance:8.000m [K=1.0000]
 Remarks:

WEC AND CCEC

Test:U:220.3V I:0.3350A P:71.90W PF:0.9720 Lamp Flux:11694.1x1 lm									
NAME: trunking system 1.5m 72w					TYPE:			WEIGHT:	
SPEC.:					DIM.:			SERIAL No.:	
MFR.:					SUR.:			PROTECTION ANGLE:	

ρcc	80%			70%			50%			30%			10%			0
ρw	50%	30%	10%	50%	30%	10%	50%	30%	10%	50%	30%	10%	50%	30%	10%	0
ρfc	20%			20%			20%			20%			20%			0
RCR	RCR:Room Cavity Ratio						Wall Exitance Coefficients (WEC)									
0.0																
1.0	.230	.131	.041	.224	.128	.041	.213	.122	.039	.202	.117	.037	.193	.112	.036	
2.0	.215	.118	.036	.210	.116	.036	.200	.111	.035	.191	.107	.034	.183	.103	.033	
3.0	.200	.107	.032	.196	.105	.032	.187	.101	.031	.179	.098	.030	.172	.095	.029	
4.0	.186	.097	.028	.182	.095	.028	.175	.093	.028	.167	.090	.027	.161	.087	.027	
5.0	.174	.089	.026	.170	.087	.025	.163	.085	.025	.157	.083	.025	.151	.081	.024	
6.0	.162	.081	.023	.159	.080	.023	.153	.078	.023	.147	.077	.023	.142	.075	.022	
7.0	.152	.075	.021	.149	.074	.021	.144	.073	.021	.139	.071	.021	.134	.070	.020	
8.0	.143	.070	.020	.141	.069	.020	.136	.068	.019	.131	.066	.019	.127	.065	.019	
9.0	.135	.065	.018	.133	.065	.018	.128	.063	.018	.124	.062	.018	.120	.061	.018	
10.0	.128	.061	.017	.125	.061	.017	.121	.060	.017	.118	.058	.017	.114	.057	.016	

ρcc	80%			70%			50%			30%			10%			0
ρw	50%	30%	10%	50%	30%	10%	50%	30%	10%	50%	30%	10%	50%	30%	10%	0
ρfc	20%			20%			20%			20%			20%			0
RCR	RCR:Room Cavity Ratio						Ceiling Cavity Exitance Coefficients (CCEC)									
0.0	.164	.164	.164	.140	.140	.140	.096	.096	.096	.055	.055	.055	.018	.018	.018	
1.0	.154	.136	.120	.132	.117	.103	.090	.080	.071	.052	.046	.041	.017	.015	.013	
2.0	.146	.116	.091	.125	.100	.079	.086	.069	.055	.049	.040	.032	.016	.013	.010	
3.0	.138	.101	.071	.119	.087	.062	.081	.061	.043	.047	.035	.026	.015	.011	.008	
4.0	.132	.090	.058	.113	.078	.050	.078	.054	.035	.045	.032	.021	.014	.010	.007	
5.0	.125	.081	.048	.108	.070	.042	.074	.049	.030	.043	.029	.018	.014	.009	.006	
6.0	.120	.074	.041	.103	.064	.036	.071	.045	.025	.041	.026	.015	.013	.009	.005	
7.0	.114	.068	.036	.098	.059	.031	.068	.042	.022	.039	.024	.013	.013	.008	.004	
8.0	.109	.063	.032	.094	.055	.028	.065	.039	.020	.038	.023	.012	.012	.007	.004	
9.0	.105	.059	.029	.090	.052	.025	.062	.036	.018	.036	.021	.011	.012	.007	.004	
10.0	.100	.056	.026	.086	.049	.023	.060	.034	.016	.035	.020	.010	.011	.007	.003	

C Range: 0 - 360DEG
 C Interval: 15.0DEG
 Test Speed: HIGH
 Temperature:25.3DEG
 Operators:senpuguangxue
 Test Date:2016-11-17

γ Range: 0 - 180DEG
 γ Interval: 1.0DEG
 Test System:EVERFINE GO-2000B_V1 SYSTEM V2.0.287
 Humidity:65.0%
 Test Distance:8.000m [K=1.0000]
 Remarks:

UGR(Unified Glare Rating) Table

Test:U:220.3V I:0.3350A P:71.90W PF:0.9720 Lamp Flux:11694.1x1 lm										
NAME: trunking system 1.5m 72w					TYPE:			WEIGHT:		
SPEC.:					DIM.:			SERIAL No.:		
MFR.:					SUR.:			PROTECTION ANGLE:		
ceiling/cavity	0.7	0.7	0.5	0.5	0.3	0.7	0.7	0.5	0.5	0.3
walls	0.5	0.3	0.5	0.3	0.3	0.5	0.3	0.5	0.3	0.3
working plane	0.2	0.2	0.2	0.2	0.2	0.2	0.2	0.2	0.2	0.2
Room dimensions	Viewed crosswise					Viewed endwise				
x = 2H y = 2H	23.2	24.6	23.5	24.8	25.0	20.9	22.3	21.2	22.5	22.7
3H	24.1	25.3	24.4	25.6	25.8	21.6	22.8	21.9	23.1	23.3
4H	24.5	25.7	24.8	25.9	26.2	21.9	23.1	22.2	23.4	23.7
6H	24.8	25.9	25.2	26.2	26.5	22.3	23.5	22.7	23.8	24.0
8H	25.0	26.1	25.3	26.4	26.7	22.6	23.7	22.9	24.0	24.3
12H	25.1	26.1	25.5	26.4	26.8	22.9	23.9	23.2	24.2	24.5
4H 2H	23.5	24.7	23.8	25.0	25.2	21.7	22.9	22.1	23.2	23.5
3H	24.7	25.8	25.1	26.1	26.4	22.6	23.6	22.9	23.9	24.2
4H	25.3	26.3	25.7	26.6	27.0	23.0	24.0	23.4	24.3	24.7
6H	25.8	26.7	26.2	27.0	27.4	23.6	24.4	24.0	24.8	25.2
8H	26.1	26.8	26.5	27.2	27.6	23.9	24.7	24.3	25.1	25.5
12H	26.3	27.0	26.7	27.4	27.8	24.2	25.0	24.7	25.4	25.8
8H 4H	25.5	26.3	25.9	26.7	27.1	23.5	24.3	23.9	24.7	25.1
6H	26.3	26.9	26.7	27.3	27.8	24.3	24.9	24.7	25.3	25.8
8H	26.6	27.2	27.1	27.6	28.1	24.7	25.3	25.2	25.7	26.2
12H	26.9	27.4	27.4	27.9	28.4	25.2	25.7	25.7	26.1	26.6
12H 4H	25.5	26.2	25.9	26.6	27.1	23.6	24.3	24.0	24.7	25.1
6H	26.3	26.9	26.8	27.3	27.8	24.4	25.0	24.9	25.5	25.9
8H	26.8	27.2	27.2	27.7	28.2	25.0	25.5	25.4	25.9	26.4
Variations with the observer position at spacings:										
S = 1.0H	+ 0.5 / - 0.4					+ 0.5 / - 0.6				
1.5H	+ 0.7 / - 0.9					+ 0.4 / - 0.5				
2.0H	+ 0.6 / - 1.1					+ 0.6 / - 0.7				

CIE Pub.117 Corrected 11694 lm Total Lamp Luminous Flux. (8log(F/F0) = 8.5)

C Range: 0 - 360DEG
C Interval: 15.0DEG
Test Speed: HIGH
Temperature:25.3DEG
Operators:senpuguangxue
Test Date:2016-11-17

γ Range: 0 - 180DEG
 γ Interval: 1.0DEG
Test System:EVERFINE GO-2000B_V1 SYSTEM V2.0.287
Humidity:65.0%
Test Distance:8.000m [K=1.0000]
Remarks:

UTILIZATION FACTORS TABLE

Test:U:220.3V I:0.3350A P:71.90W PF:0.9720 Lamp Flux:11694.1x1 lm		
NAME: trunking system 1.5m 72w	TYPE:	WEIGHT:
SPEC.:	DIM.:	SERIAL No.:
MFR.:	SUR.:	PROTECTION ANGLE:

REFLECTANCE										
Ceiling	0.8	0.8	0.8	0.7	0.7	0.7	0.5	0.5	0.5	0
Walls	0.7	0.5	0.3	0.7	0.5	0.3	0.7	0.5	0.3	0
Working plane	0.2	0.2	0.2	0.2	0.2	0.2	0.2	0.2	0.2	0
ROOM INDEX	UTILIZATION FACTORS (PERCENT) $k(RI) \times RCR = 5$									
k = 0.60	53	45	39	53	44	39	52	44	39	35
0.80	61	53	47	60	52	47	59	52	47	42
1.00	67	59	54	67	59	54	65	60	54	48
1.25	73	65	60	72	65	60	70	63	59	54
1.50	76	69	64	75	69	64	73	67	63	57
2.00	81	75	70	80	74	70	77	72	68	62
2.50	84	78	74	82	77	73	79	75	71	65
3.00	86	81	77	84	80	76	81	77	74	68
4.00	89	85	81	87	83	80	83	80	78	71
5.00	91	87	84	89	85	83	85	82	80	73
ROOM INDEX	UF(total)									Direct
According to DIN EN 13032-2 2004			Suspended				SHRNOM = 1.25			

C Range: 0 - 360DEG
 C Interval: 15.0DEG
 Test Speed: HIGH
 Temperature:25.3DEG
 Operators:senpuguangxue
 Test Date:2016-11-17

γ Range: 0 - 180DEG
 γ Interval: 1.0DEG
 Test System:EVERFINE GO-2000B_V1 SYSTEM V2.0.287
 Humidity:65.0%
 Test Distance:8.000m [K=1.0000]
 Remarks:

ISOCANDELA DIAGRAM

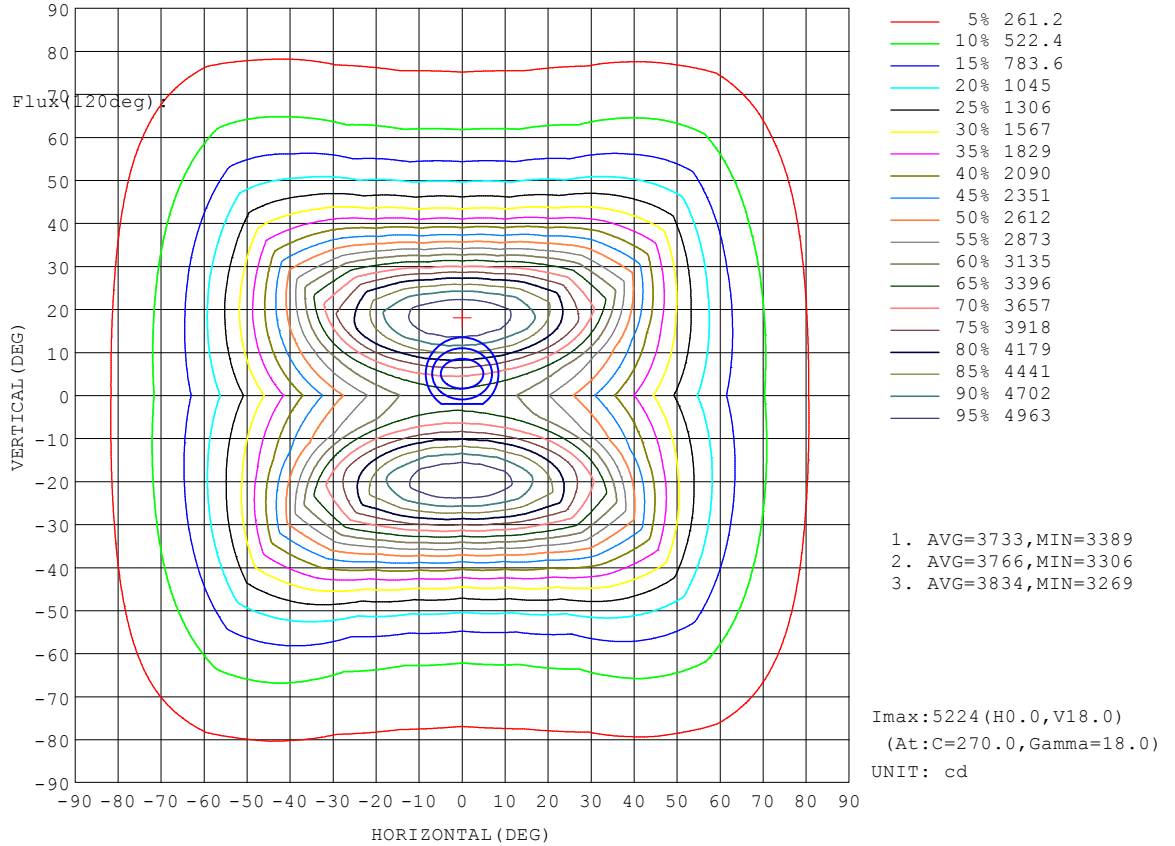
Test:U:220.3V I:0.3350A P:71.90W PF:0.9720 Lamp Flux:11694.1x1 lm		
NAME: trunking system 1.5m 72w	TYPE:	WEIGHT:
SPEC.:	DIM.:	SERIAL No.:
MFR.:	SUR.:	PROTECTION ANGLE:

Conical surface Flux(90deg):

6316 lm
 %lum = 65.4%
 %lamp = 54.0%

Conical surface Flux(20deg):

8203.2 lm
 %lum = 85.0%
 %lamp = 70.1%

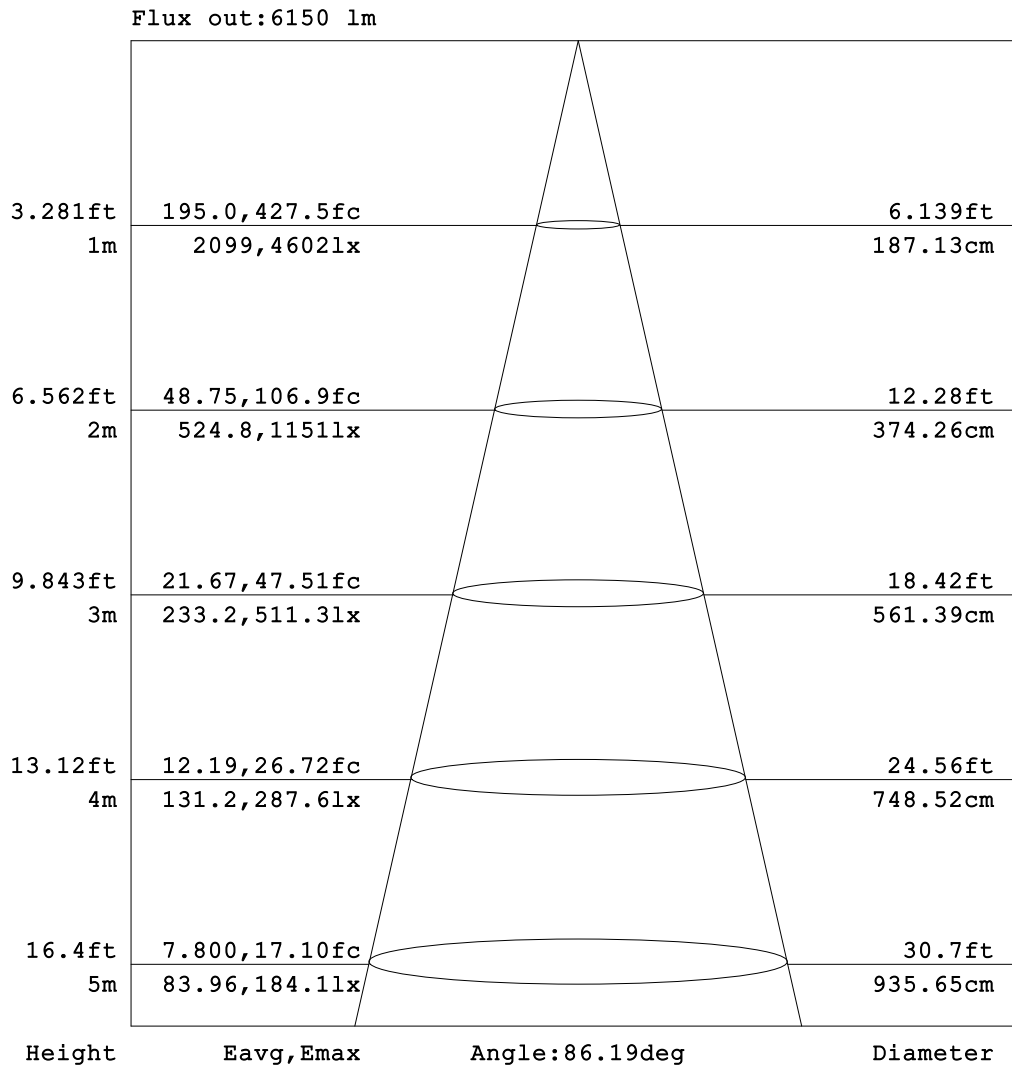


C Range: 0 - 360DEG
 C Interval: 15.0DEG
 Test Speed: HIGH
 Temperature:25.3DEG
 Operators:senpuguangxue
 Test Date:2016-11-17

γ Range: 0 - 180DEG
 γ Interval: 1.0DEG
 Test System:EVERFINE GO-2000B_V1 SYSTEM V2.0.287
 Humidity:65.0%
 Test Distance:8.000m [K=1.0000]
 Remarks:

AAI Figure

Test:U:220.3V I:0.3350A P:71.90W PF:0.9720 Lamp Flux:11694.1x1 lm		
NAME: trunking system 1.5m 72w	TYPE:	WEIGHT:
SPEC.:	DIM.:	SERIAL No.:
MFR.:	SUR.:	PROTECTION ANGLE:



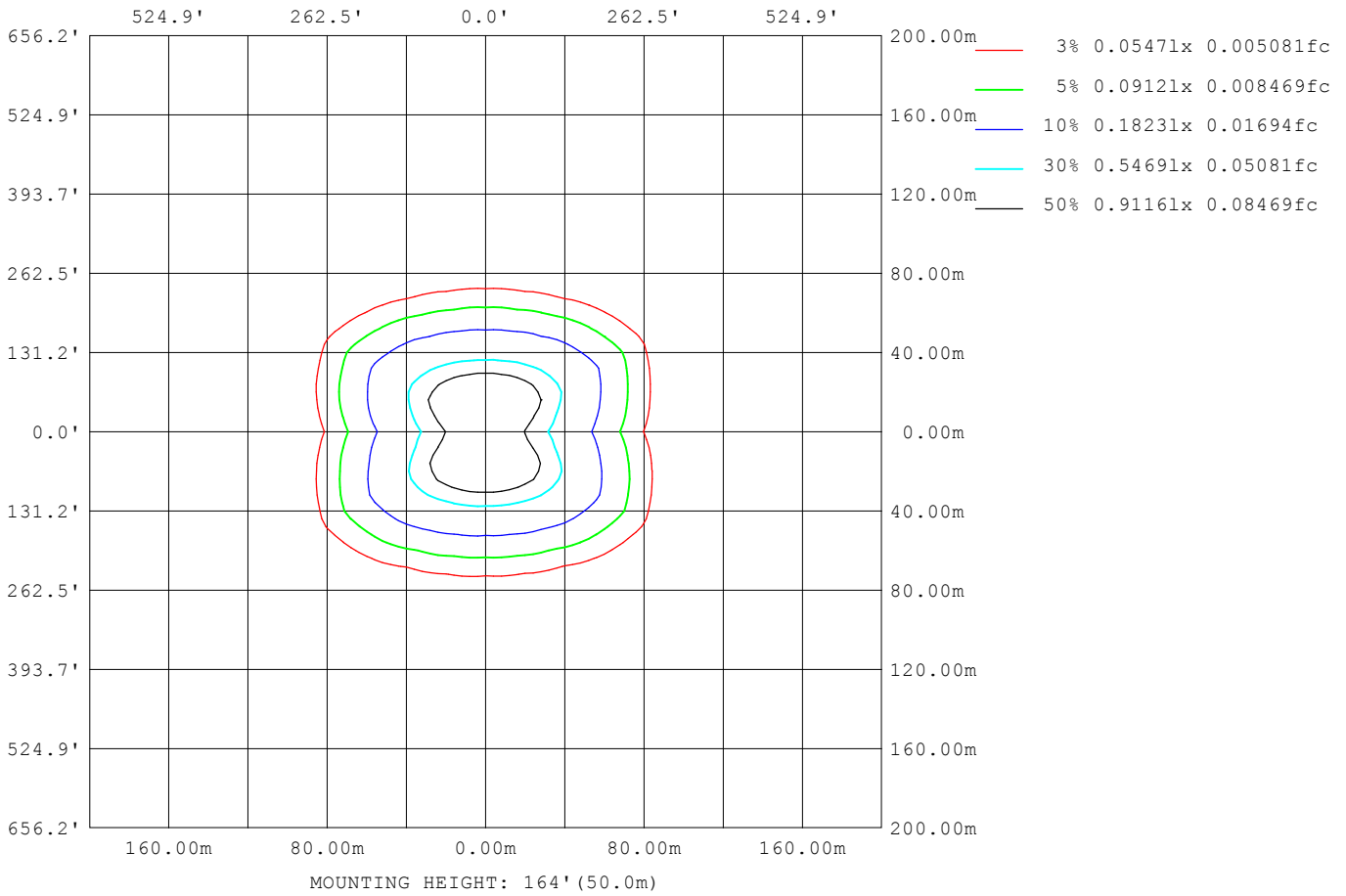
Note: The Curves indicate the illuminated area and the average illumination when the luminaire is at different distance.

C Range: 0 - 360DEG
 C Interval: 15.0DEG
 Test Speed: HIGH
 Temperature: 25.3DEG
 Operators: senpuguangxue
 Test Date: 2016-11-17

γ Range: 0 - 180DEG
 γ Interval: 1.0DEG
 Test System: EVERFINE GO-2000B_V1 SYSTEM V2.0.287
 Humidity: 65.0%
 Test Distance: 8.000m [K=1.0000]
 Remarks:

ISOLUX DIAGRAM

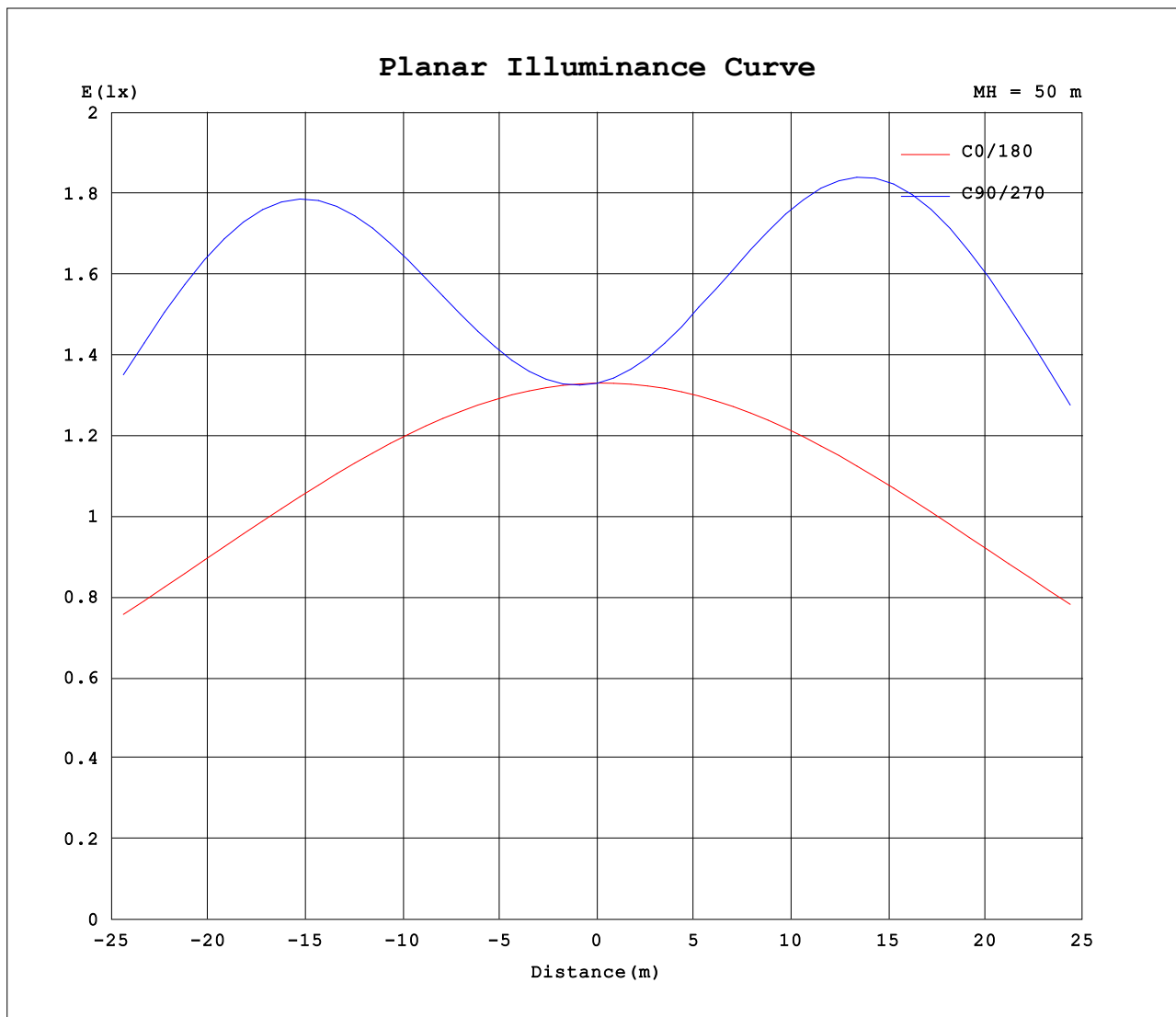
Test:U:220.3V I:0.3350A P:71.90W PF:0.9720 Lamp Flux:11694.1x1 lm		
NAME: trunking system 1.5m 72w	TYPE:	WEIGHT:
SPEC.:	DIM.:	SERIAL No.:
MFR.:	SUR.:	PROTECTION ANGLE:



C Range: 0 - 360DEG
 C Interval: 15.0DEG
 Test Speed: HIGH
 Temperature:25.3DEG
 Operators:senpuguangxue
 Test Date:2016-11-17

γ Range: 0 - 180DEG
 γ Interval: 1.0DEG
 Test System:EVERFINE GO-2000B_V1 SYSTEM V2.0.287
 Humidity:65.0%
 Test Distance:8.000m [K=1.0000]
 Remarks:

Planar Illuminance Curve



C Range: 0 - 360DEG
 C Interval: 15.0DEG
 Test Speed: HIGH
 Temperature: 25.3DEG
 Operators: senpuguangxue
 Test Date: 2016-11-17

γ Range: 0 - 180DEG
 γ Interval: 1.0DEG
 Test System: EVERFINE GO-2000B_V1 SYSTEM V2.0.287
 Humidity: 65.0%
 Test Distance: 8.000m [K=1.0000]
 Remarks:

LUMINOUS DISTRIBUTION INTENSITY DATA

Test:U:220.3V I:0.3350A P:71.90W PF:0.9720 Lamp Flux:11694.1x1 lm		
NAME: trunking system 1.5m 72w	TYPE:	WEIGHT:
SPEC.:	DIM.:	SERIAL No.:
MFR.:	SUR.:	PROTECTION ANGLE:

Table--1

UNIT: cd

C (DEG) γ (DEG)	0	15	30	45	60	75	90	105	120	135	150	165	180	195	210	225	240	255	270
0	3326	3327	3328	3329	3327	3331	3325	3331	3324	3323	3320	3316	3326	3327	3328	3329	3327	3331	3325
5	3290	3282	3316	3369	3437	3476	3506	3493	3451	3385	3332	3295	3310	3365	3452	3557	3639	3715	3717
10	3204	3234	3413	3659	3918	4076	4163	4086	3940	3686	3442	3262	3241	3392	3663	3984	4243	4433	4465
15	3067	3177	3584	4088	4541	4796	4904	4807	4570	4118	3619	3213	3121	3396	3908	4452	4840	5064	5107
20	2883	3103	3767	4479	4958	5158	5212	5174	4990	4512	3805	3145	2952	3368	4116	4769	5087	5156	5163
25	2656	3000	3893	4651	4897	4860	4802	4885	4934	4689	3934	3044	2739	3289	4210	4771	4816	4629	4568
30	2399	2855	3889	4479	4336	4054	3920	4086	4380	4533	3941	2901	2490	3144	4137	4432	4132	3747	3637
35	2116	2656	3718	3989	3517	3127	2967	3161	3567	4059	3785	2703	2206	2926	3883	3837	3292	2834	2710
40	1827	2394	3383	3322	2702	2290	2151	2320	2758	3402	3465	2451	1917	2633	3474	3137	2494	2066	1954
45	1539	2087	2914	2632	1995	1636	1518	1660	2045	2717	3008	2145	1626	2285	2959	2456	1838	1488	1404
50	1267	1753	2385	1997	1436	1158	1073	1175	1480	2080	2484	1816	1349	1905	2402	1865	1342	1077	1017
55	1032	1419	1872	1484	1027	830	775	843	1059	1556	1965	1482	1100	1527	1875	1391	980	792	751
60	835	1115	1411	1088	748	617	582	625	773	1145	1498	1175	890	1184	1417	1032	727	598	572
65	673	852	1033	806	570	484	459	489	586	848	1104	910	717	898	1046	764	553	467	449
70	531	635	742	601	442	389	374	391	455	631	798	684	568	667	752	570	426	367	351
75	402	461	522	447	339	299	285	302	350	469	564	502	432	481	528	424	319	273	263
80	276	312	353	317	259	236	226	238	266	336	384	346	302	324	356	296	240	212	205
85	156	184	208	197	175	167	161	169	182	215	237	212	179	193	206	173	151	139	138
90	65.6	83.4	99.0	116	125	127	125	130	128	121	113	93.2	60.7	75.8	88.1	100	100	93.6	92.4
95	69.8	84.3	97.6	103	103	102	99.6	100	101	101	96.9	84.9	56.5	73.1	83.4	88.8	88.4	87.1	87.2
100	71.4	80.7	92.2	102	108	108	106	103	102	99.3	91.5	80.7	59.8	69.3	79.4	89.2	101	109	115
105	0.00	0.00	0.00	0.00	0.00	0.00	0.00	0.00	0.00	0.00	0.00	0.00	0.00	0.00	0.00	0.00	0.00	0.00	0.00
110	0.00	0.00	0.00	0.00	0.00	0.00	0.00	0.00	0.00	0.00	0.00	0.00	0.00	0.00	0.00	0.00	0.00	0.00	0.00
115	0.00	0.00	0.00	0.00	0.00	0.00	0.00	0.00	0.00	0.00	0.00	0.00	0.00	0.00	0.00	0.00	0.00	0.00	0.00
120	0.00	0.00	0.00	0.00	0.00	0.00	0.00	0.00	0.00	0.00	0.00	0.00	0.00	0.00	0.00	0.00	0.00	0.00	0.00
125	0.00	0.00	0.00	0.00	0.00	0.00	0.00	0.00	0.00	0.00	0.00	0.00	0.00	0.00	0.00	0.00	0.00	0.00	0.00
130	0.00	0.00	0.00	0.00	0.00	0.00	0.00	0.00	0.00	0.00	0.00	0.00	0.00	0.00	0.00	0.00	0.00	0.00	0.00
135	0.00	0.00	0.00	0.00	0.00	0.00	0.00	0.00	0.00	0.00	0.00	0.00	0.00	0.00	0.00	0.00	0.00	0.00	0.00
140	0.00	0.00	0.00	0.00	0.00	0.00	0.00	0.00	0.00	0.00	0.00	0.00	0.00	0.00	0.00	0.00	0.00	0.00	0.00
145	0.00	0.00	0.00	0.00	0.00	0.00	0.00	0.00	0.00	0.00	0.00	0.00	0.00	0.00	0.00	0.00	0.00	0.00	0.00
150	0.00	0.00	0.00	0.00	0.00	0.00	0.00	0.00	0.00	0.00	0.00	0.00	0.00	0.00	0.00	0.00	0.00	0.00	0.00
155	0.00	0.00	0.00	0.00	0.00	0.00	0.00	0.00	0.00	0.00	0.00	0.00	0.00	0.00	0.00	0.00	0.00	0.00	0.00
160	0.00	0.00	0.00	0.00	0.00	0.00	0.00	0.00	0.00	0.00	0.00	0.00	0.00	0.00	0.00	0.00	0.00	0.00	0.00
165	0.00	0.00	0.00	0.00	0.00	0.00	0.00	0.00	0.00	0.00	0.00	0.00	0.00	0.00	0.00	0.00	0.00	0.00	0.00
170	0.00	0.00	0.00	0.00	0.00	0.00	0.00	0.00	0.00	0.00	0.00	0.00	0.00	0.00	0.00	0.00	0.00	0.00	0.00
175	0.00	0.00	0.00	0.00	0.00	0.00	0.00	0.00	0.00	0.00	0.00	0.00	0.00	0.00	0.00	0.00	0.00	0.00	0.00
180	0.00	0.00	0.00	0.00	0.00	0.00	0.00	0.00	0.00	0.00	0.00	0.00	0.00	0.00	0.00	0.00	0.00	0.00	0.00

C Range: 0 - 360DEG
 C Interval: 15.0DEG
 Test Speed: HIGH
 Temperature:25.3DEG
 Operators:senpuguangxue
 Test Date:2016-11-17

γ Range: 0 - 180DEG
 γ Interval: 1.0DEG
 Test System:EVERFINE GO-2000B_V1 SYSTEM V2.0.287
 Humidity:65.0%
 Test Distance:8.000m [K=1.0000]
 Remarks:

LUMINOUS DISTRIBUTION INTENSITY DATA

Test:U:220.3V I:0.3350A P:71.90W PF:0.9720 Lamp Flux:11694.1x1 lm		
NAME: trunking system 1.5m 72w	TYPE:	WEIGHT:
SPEC.:	DIM.:	SERIAL No.:
MFR.:	SUR.:	PROTECTION ANGLE:

Table--2

UNIT: cd

C (DEG) γ (DEG)	285	300	315	330	345														
0	3331	3324	3323	3320	3316														
5	3698	3611	3520	3412	3327														
10	4402	4188	3912	3584	3321														
15	5029	4773	4355	3795	3292														
20	5140	5034	4666	3974	3230														
25	4626	4793	4691	4052	3120														
30	3756	4137	4387	3981	2952														
35	2845	3308	3822	3743	2719														
40	2077	2517	3137	3356	2422														
45	1494	1852	2461	2863	2081														
50	1080	1349	1869	2320	1721														
55	794	983	1393	1809	1373														
60	599	728	1031	1362	1065														
65	468	552	761	997	810														
70	367	425	565	712	603														
75	273	315	415	495	436														
80	211	236	285	328	290														
85	140	148	164	186	163														
90	94.9	98.8	102	84.5	68.6														
95	89.0	90.0	89.2	82.3	70.5														
100	115	106	91.3	80.7	68.9														
105	0.00	0.00	0.00	0.00	0.00														
110	0.00	0.00	0.00	0.00	0.00														
115	0.00	0.00	0.00	0.00	0.00														
120	0.00	0.00	0.00	0.00	0.00														
125	0.00	0.00	0.00	0.00	0.00														
130	0.00	0.00	0.00	0.00	0.00														
135	0.00	0.00	0.00	0.00	0.00														
140	0.00	0.00	0.00	0.00	0.00														
145	0.00	0.00	0.00	0.00	0.00														
150	0.00	0.00	0.00	0.00	0.00														
155	0.00	0.00	0.00	0.00	0.00														
160	0.00	0.00	0.00	0.00	0.00														
165	0.00	0.00	0.00	0.00	0.00														
170	0.00	0.00	0.00	0.00	0.00														
175	0.00	0.00	0.00	0.00	0.00														
180	0.00	0.00	0.00	0.00	0.00														

C Range: 0 - 360DEG
 C Interval: 15.0DEG
 Test Speed: HIGH
 Temperature:25.3DEG
 Operators:senpuguangxue
 Test Date:2016-11-17

γ Range: 0 - 180DEG
 γ Interval: 1.0DEG
 Test System:EVERFINE GO-2000B_V1 SYSTEM V2.0.287
 Humidity:65.0%
 Test Distance:8.000m [K=1.0000]
 Remarks: